



JUICE  
EXTRACTOR  
#68



# FIRST USE

1 - Please, make sure that the basket is clean and in place, with nothing inside.



2- Plug-in the machine on single plug : do not use an extension lead.



3 - Make sure that the pulp container is in place and put a jug under the spout.



4 - Lock the cover with the handle.





5 - Switch on the machine (Press down the green button)



6 - Put the fruits into the chute and push with the pusher



7 - When you have enough juice, please press down the yellow button.



FRUITS	FRUITS WITH STONES
OK	<b>Remove the stones</b>



# CLEANING PROCEDURE

1 - Clean the basket every 30 juices (approx. 10 liters)

✓ Remove the basket



✓ Wash the basket with a soft brush

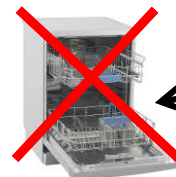


3 - Clean all parts (bowl, basket and lid) and empty the pulp container every 2-3 hours

✓ Remove the bowl, basket, lid and pulp container.

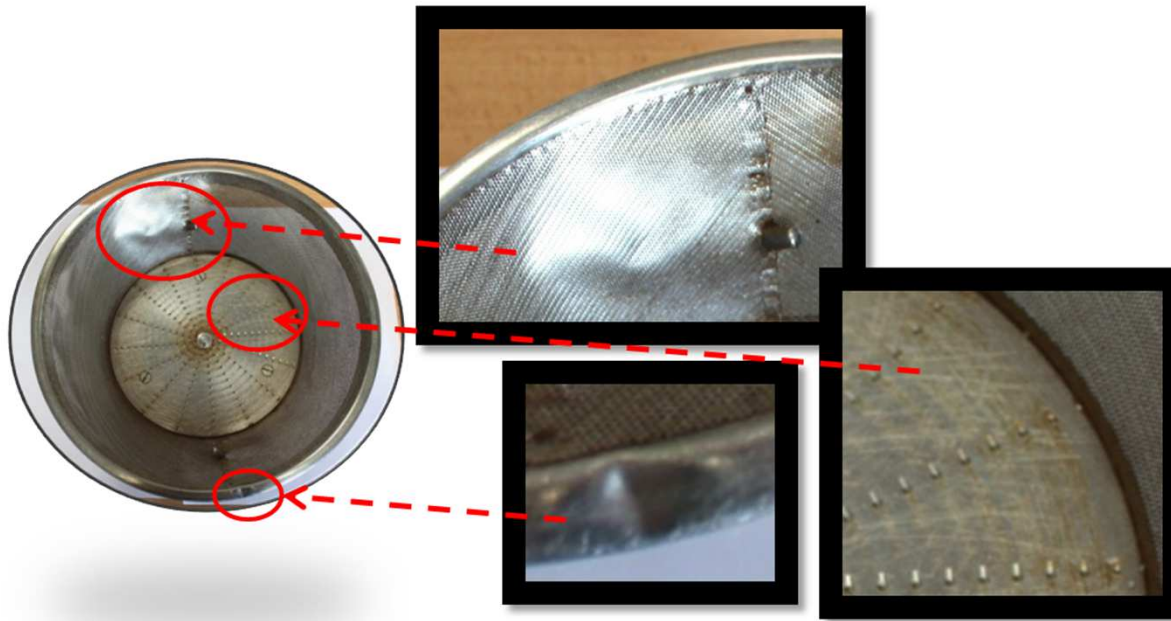


Don't put the basket in the dishwasher



# MAINTENANCE PROCEDURE

- Repeat the cleaning procedure.
- Check the basket condition : pins in place, check that there is no damage, check that the filter holes are not blocked, soak it in soapy water over night (do it on a weekly basis)
- ✓ Example: Picture of damaged basket (bumps, scratches...):



- We advise to change the basket once a year